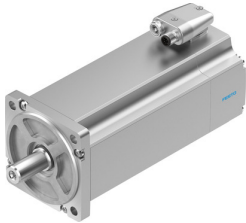


# Servo motor EMME-AS-100-M-HS-AM

Part number: 2103500

FESTO



## Data sheet

Feature	Value
Number of pole pairs	3
Type code	EMME-AS
Rotor position sensor	Absolute encoder, multi-turn
Rotor position sensor interface	RS422 TTL A/B channels + zero index
Rotor position sensor measuring principle	Capacitive
Max. rotational speed	3941 1/min
Nominal rotary speed	3000 1/min
Continuous stall current	4.6 A
Insulation protection class	F
Motor constants	1.561 Nm/A
Nominal operating voltage DC	565 V
Motor nominal power	2000 W
DC nominal voltage	565 V
Motor nominal current	4.1 A
Typical rotor position sensor resolution	12 bit
Rotor position encoder, typical angular accuracy	20 arcmin
Rotor position encoder, sinusoidal/cosinusoidal periods per revolution	16
Phase-phase winding resistance	3.2 Ohm
Winding inductance phase-phase	12 mH
Type of winding switch	Star inside
Peak current	18.4 A
Voltage constant, phase-to-phase	101.4 mVmin
Rating class according to EN 60034-1	S1
CE marking (see declaration of conformity)	As per EU low voltage directive As per EU EMC directive
Corrosion resistance class (CRC)	0 - No corrosion stress
Storage temperature	-20 °C ... 70 °C
Relative air humidity	0 - 90 %
Degree of protection	IP21
Ambient temperature	-10 °C ... 40 °C
Certification	c UL us - Recognized (OL) RCM compliance mark
Total output inertia moment	6.41 kgcm <sup>2</sup>
Nominal torque	6.4 Nm
Peak torque	30 Nm

<b>Feature</b>	<b>Value</b>
Stall torque	7.5 Nm
Permissible axial shaft load	136 N
Permissible radial shaft load	680 N
MTTFd, subcomponent	271 years, rotor position sensor
Product weight	7550 g
Electrical connection technology	Plug
Note on materials	RoHS-compliant Contains paint-wetting impairment substances
Conforms to standard	IEC 60034